

# Professional Office Space

## Countryside Area, Clearwater Florida



## Carib-Gulf Realty

*Every effort is made to provide accurate information. However, we cannot be held responsible for misstatements of facts, errors or omissions, change of offering in any way, or withdrawal from the market without notice.*

*Copyright© 1978 - 2006. Carib-Gulf Corporation All Rights Reserved.*

# PROPERTY PROFILE

**NARRATIVE:** This full service professional office condominium contains two contiguous executive offices currently available for rent. Well located in the upscale Countryside area of Clearwater, Florida, these offices have a prestigious address and overlook Clearwater Community Golf Course. Common areas include restroom, storage area, coffee area, and conference area. These executive offices are ideally suited for the small business entrepreneur who needs an office with a shared common space, prestigious zip code and a well known address - all at a reasonable and competitive rental rate.

**LOCATION:** 2555 Enterprise Road  
Suite 12  
Clearwater, FL 33763

**FEATURES:** Check these amenities:

- Prestigious Zip Code
- Countryside Address
- All Ground Floor, Ample Parking
- Wireless High Speed Internet Connection
- Corner Units
- Window Units
- Furnished
- Private En Suite Wet Bar
- Tree Shaded Campus Setting
- Excellent Access to Major Thoroughfares

**UNIT E:** A corner unit on the southwest corner, this unit contains 136 square feet, and rents for \$395 per month. It has a built in wet-bar and storage closet.

**UNIT F:** An exterior unit on the west elevation, this unit contains 133 square feet, features a built-in wet bar, and rents \$395 per month.

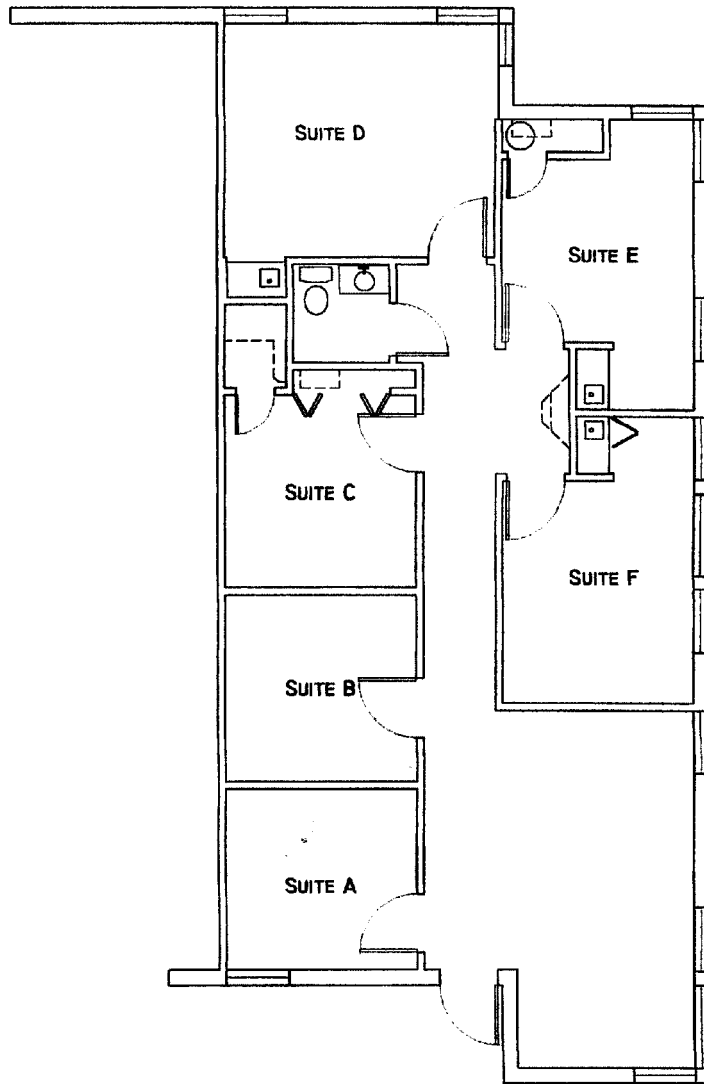
**SERVICES:** Full service, excluding telephone services.

**CONTACT:** A. Linn Wyllie, REALTOR®, CEA, C-CREC, GREC  
**CARIB-GULF REALTY**  
Office: 727.725.9800  
Cell: 727.224.9333  
Email: [linnwylle@carib-gulf.com](mailto:linnwylle@carib-gulf.com)

# Carib-Gulf Group

Real Estate, Venture Capital, Mortgages  
(815) 725-9800

## DIMENSIONZ



2555 Enterprise Rd., Suite 12

1/8" = 1'-0"

1179 S.F.